

RG, 28.07.2010, Version 4

## **EFOY Firmware Update Tool**

The Firmware Update Tool (EUT) can be used to update the EFOY and EFOY Pro fuel cells directly from your computer, or update your EFOY Updater. If you don't have any EFOY Updater, please contact SFC at: [sales@sfc.com](mailto:sales@sfc.com), or 0049 89 673 592 0

Please install the new EUT to your computer before installing the new Firmware Version

### **1. System Requirements**

#### **Required components:**

- Interface Adapter IA1
- USB Adapter (required to connect with USB computer port)
- Data line Cat.5
- PC with installed EFOY Update Tool
- USB Power cable for updating the EFOY Updater (Delock: [www.delock.com](http://www.delock.com), Part nr: 82197, Spec: USB-A male, CD jack cupped 5,4 mm outside, 2,0 mm inside, Voltage 5V)

#### **Computer system requirements**

- Operating system Windows 2000, XP SP2 or Windows Vista
- Serial COM interface or USB port with USB-RS232 adapter

### **2. EFOY Update Tool installation**

#### **Install Software**

- and the included latest EFOY Firmware Package file.

#### **EFOY Update Tool**

- Is a Microsoft Windows based program that transfers the new firmware to the fuel cell.
- Installation: Start the setup file "Setup\_SFCEUT.msi" to install the EFOY Update Tool.

#### **EFOY Firmware Package**

- The Firmware Package "EFOY.fwp" includes the latest version of the EFOY Firmware which will be transferred to the EFOY fuel cell during the update process.
- This firmware file needs to be exchanged when a new firmware package is available.

### 3. Update the fuel cell

#### 3.1. connect computer to the fuel cell



1. The fuel cell must be connected to a functional battery. Battery voltage must be higher than 10,5 V.
2. The fuel cell must be in Off-mode



2. Connect the end of the data line to the interface adapter IA1.

Use only a Cat. 5 data line like the one that is used to connect the remote control.



3. Connect the interface adapter IA1 to the COM interface of your computer (RS232 interface).



If you do not have an RS232 COM port, but a USB port then use a USB-to-RS232 adapter.

SFC offers a tested USB adapter, but it is possible to use other standard adapters.

USB adapters are usually installed on the computer. Follow the manufacturer's installation directions.



Then connect the interface adapter IA1 to the USB adapter.

Use a free USB port to connect the adapter to your computer.



4. Connect the RJ45 plug on the data line to the data interface of your fuel cell.

### 3.2. Update Instructions

1. Connect computer with data cable to fuel cell (see 3.)

2. Start EFOY Update Tool

3. EFOY Update Tool establishes connection with fuel cell

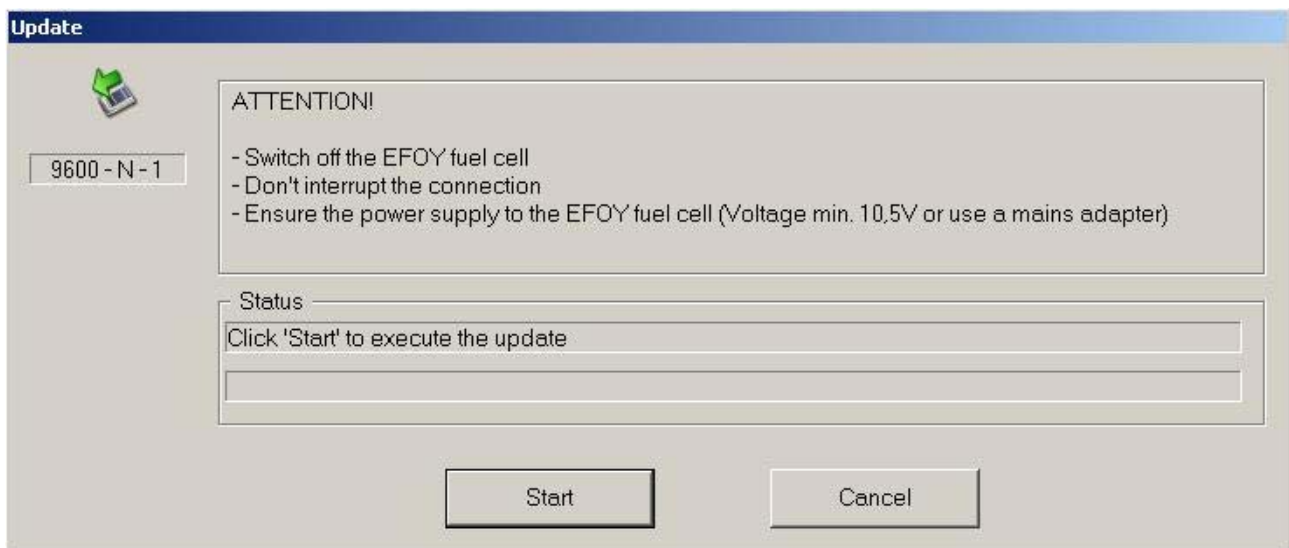
- If connection is successful: the the EUT shows “Connected” and data from the fuel cell



4. Press “Update Firmware” button to start update

**Note:** If Update button is gray then latest firmware is installed.

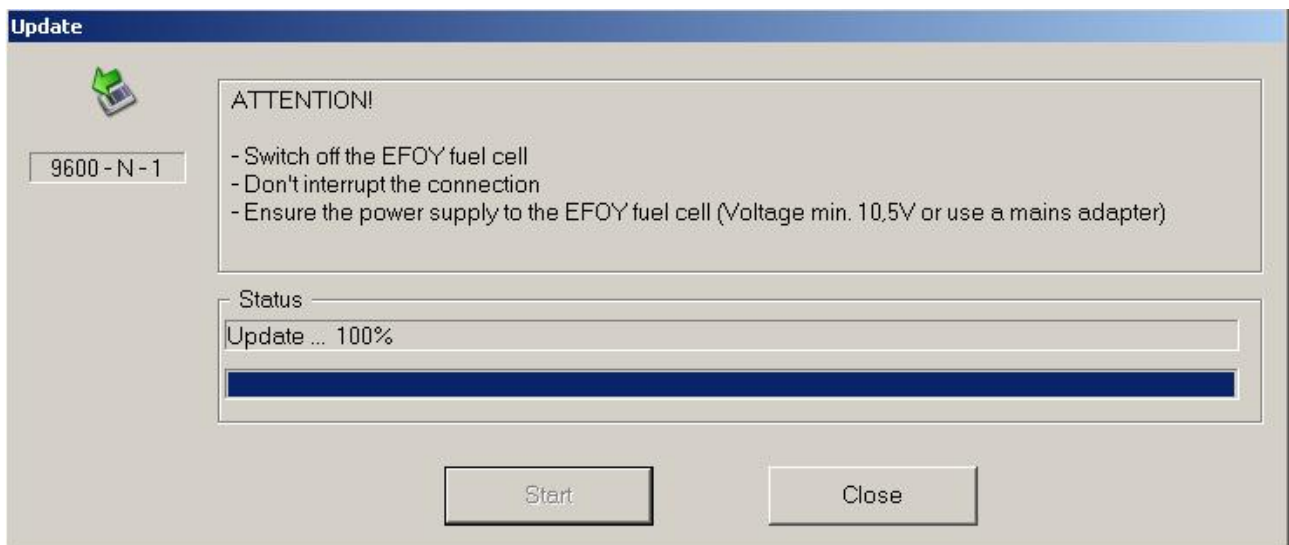
Press “Start” at next screen to execute the update. Screen will show update status.



**5. Wait until Update is finished**

Press "Close" after Update is finished (100 %).

Verify that now the latest firmware is installed.



### Change firmware file

- Save the new firmware file from SFC at your computer.
- Click at “Options” and then “Firmware File” in the EFOY Update Tool to select new firmware file.

### Change computer interface

- Click at “Options” and then “Interface” in the EFOY Update Tool to select new interface.
- This might be necessary if the Update Tool can not connect with the fuel cell.
- It is possible to “search automatically” or to select a COM interface.

## 4. Update the EFOY Updater

It is now possible to update the EFOY Updater



### 4.1. Connect EFOY Updater to Computer



2. Connect the end of the data line to the interface adapter IA1.

Use only a Cat. 5 data line like the one that is used to connect the remote control.



3. Connect the interface adapter IA1 to the COM interface of your computer (RS232 interface).



If you do not have an RS232 COM port, but a USB port then use a USB-to-RS232 adapter.

SFC offers a tested USB adapter, but it is possible to use other standard adapters.

USB adapters are usually installed on the computer. Follow the manufacturer’s installation directions.



Then connect the interface adapter IA1 to the USB adapter.  
Use a free USB port to connect the adapter to your computer.



4. Connect the RJ45 plug on the data line to the “Optional RC/PC” interface of the Updater



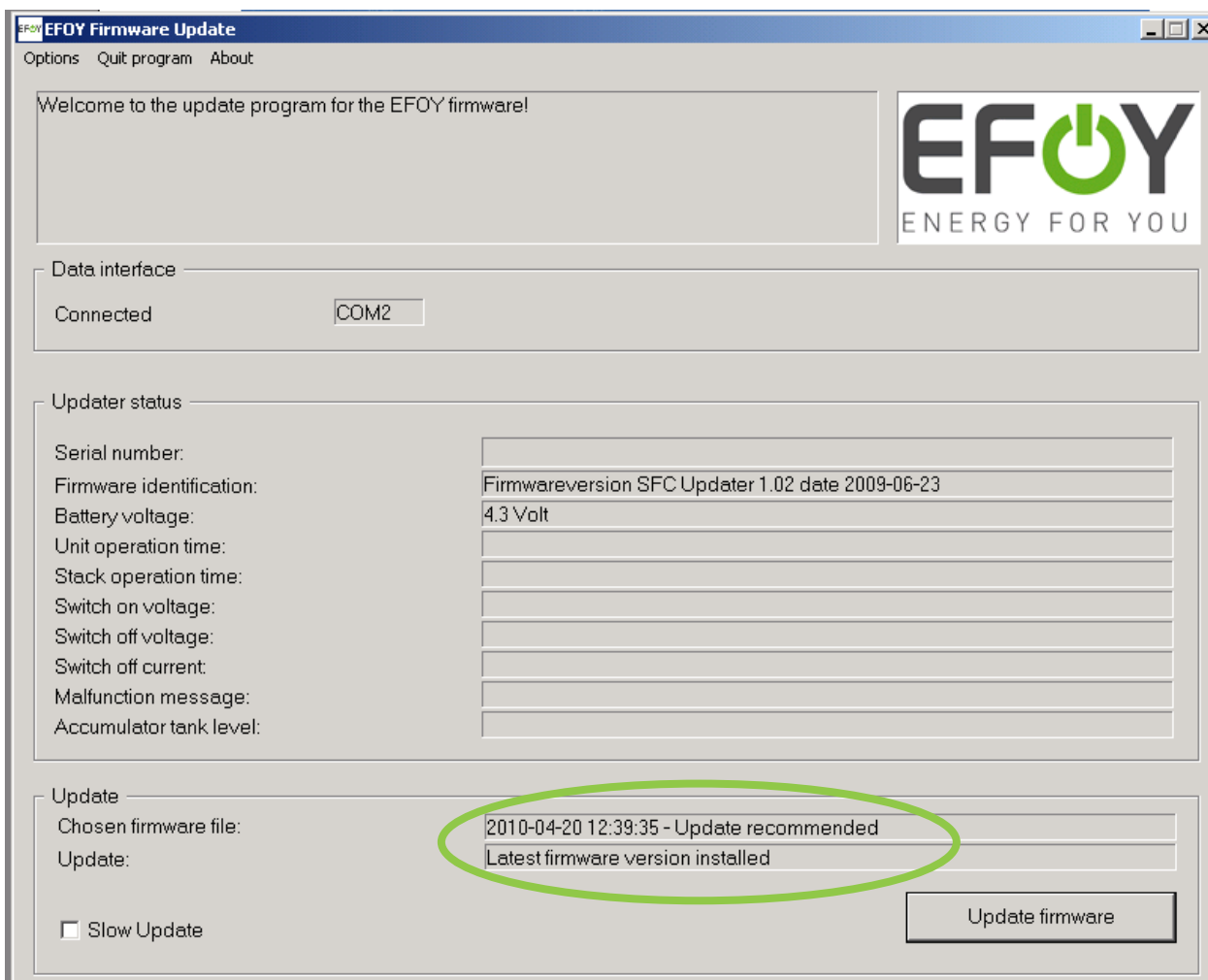
5. Connect the USB power cable between the EFOY Updater and the computer

#### 4.2. Update the EFOY Updater

##### 1. Start EFOY Update Tool

2. EFOY Update Tool establishes connection with the EFOY Update Tool. If connection is not possible, check the COM Port that is used in “options”, “Interface”.

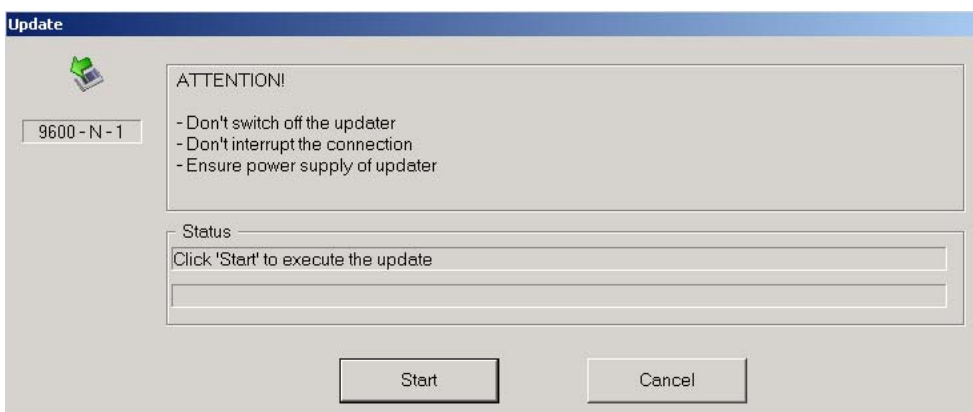
- If connection is successful: the the EUT shows “Connected” and data from the EFOY Updater



**4. Press “Update Firmware” button to start update**

**Note: If Update button is gray then latest firmware is installed.**

**Press “Start” at next screen to execute the update. Sreen will show update status.**



## 5. Wait until Update is finished

Press "Close" after Update is finished (100 %).

The new Firmware is now installed on the EFOY Updater.

